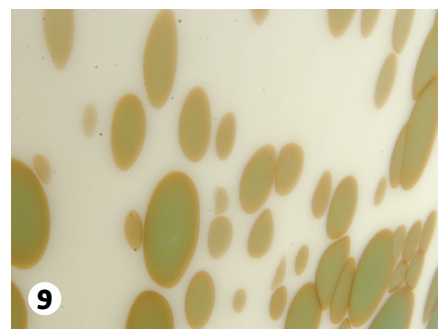
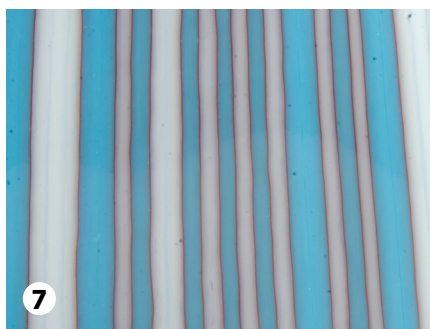
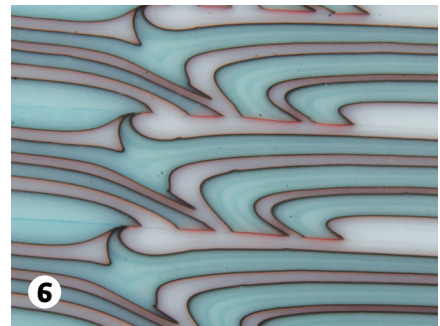
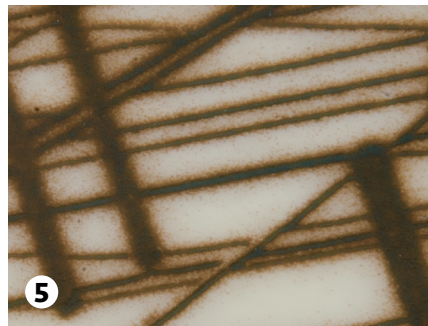
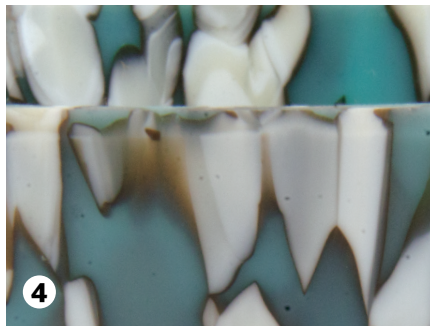
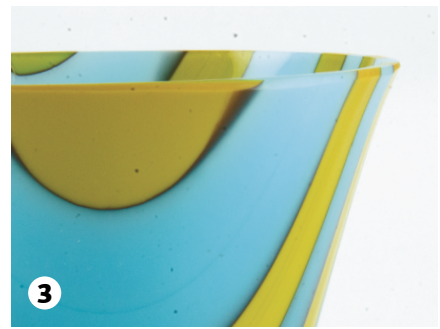
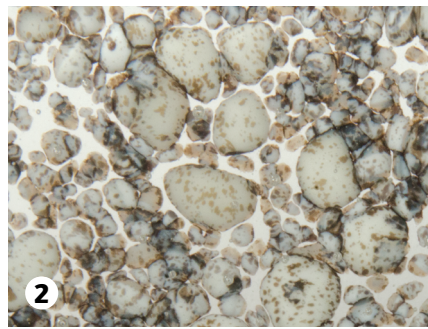
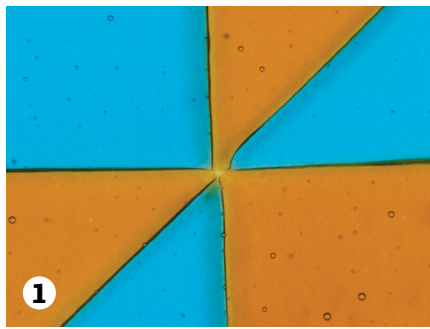


🌀 Quick Tip: Reaction Action



When certain Bullseye glasses are fired in contact with one another, their chemistries interact at the interface to create varied effects and colors. Here are close-up examples of some of our favorite reactions, including copper+sulfur, copper+reactive, and lead+sulfur.

Styles Used in the Examples Above

1. Copper: [Light Turquoise Blue](#) (001416) sheet
Sulfur: [Medium Amber](#) (001137) sheet
2. Lead: [Sunset Coral](#) (001305) powder
Sulfur: [French Vanilla](#) (000137), medium and coarse frit.
For instructions, see [Quick Tip: River Rock Reaction](#).
3. Copper: [Light Cyan](#) (000216) rod
Sulfur: [Golden Green](#) (000227) rod
4. Sulfur: [French Vanilla](#) (000137) coarse frit
Copper: [Turquoise](#) (000116) coarse frit
5. Sulfur: [French Vanilla](#) (000137) sheet
Copper: [Steel Blue](#) (000146) powder
6. Copper: [Robin's Egg Blue](#) (000161) sheet
Reactive: [Reactive Cloud Opal](#) (000009) sheet
7. Copper: [Light Cyan](#) (000216) sheet
Reactive: [Reactive Cloud Opal](#) (000009)
8. Copper: [Robin's Egg Blue](#) (000161) sheet
Sulfur: [Spring Green](#) (000126) Vitrigraph stringer
9. Sulfur: [French Vanilla](#) (000137) sheet
Copper: [Light Aquamarine Blue](#) (001408), medium and coarse frit

RESOURCES

- [Reactive Potential of Bullseye Glass](#) (chart)
- [Get a Reaction](#) (article)
- [TechNotes 2: The Vitrigraph Kiln](#) (article)
- [Color Reactions and Special Effects](#) (video)